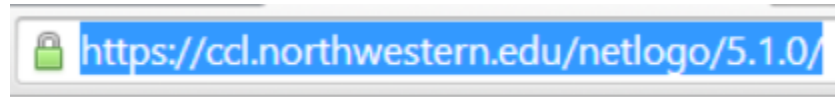


NetLogo Environmental Simulation Instructions

Setting up NetLogo

1. Go to <https://ccl.northwestern.edu/netlogo/5.1.0/>.





2. Select the appropriate installer based on your operating system.



NetLogo 5.1.0 Downloads

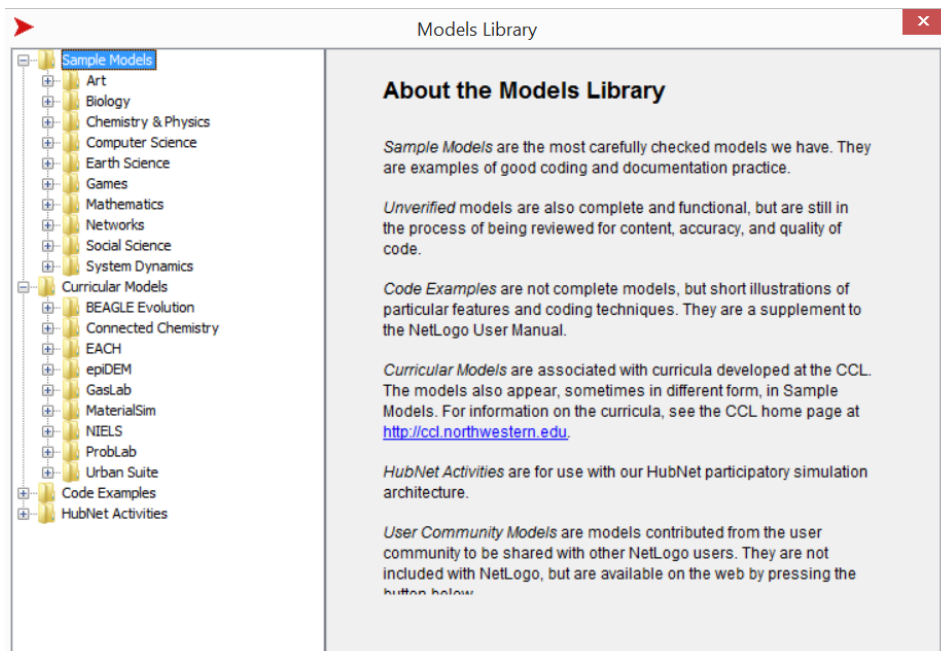
July 25, 2014

	Mac OS X	Download (69M)
	Windows	Download (89M)
	Other	Download (67M)

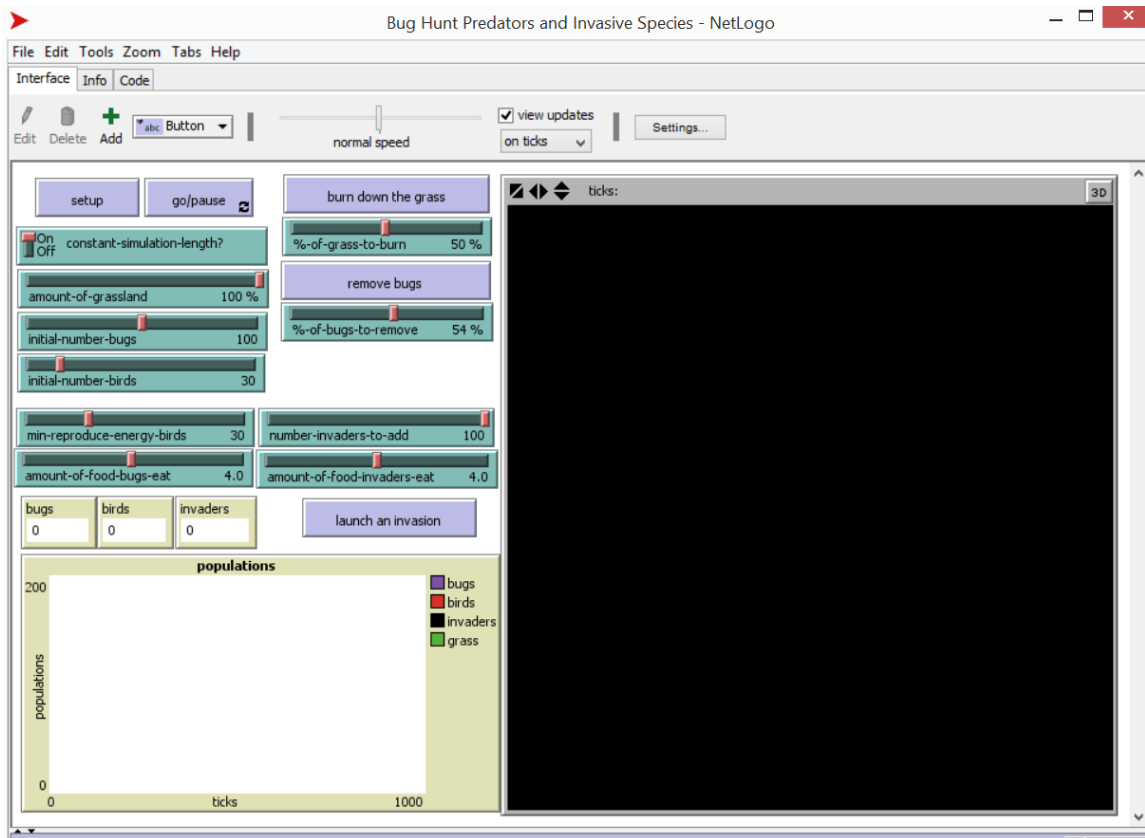
3. After the installer has been downloaded, follow the instructions and install NetLogo

Using NetLogo

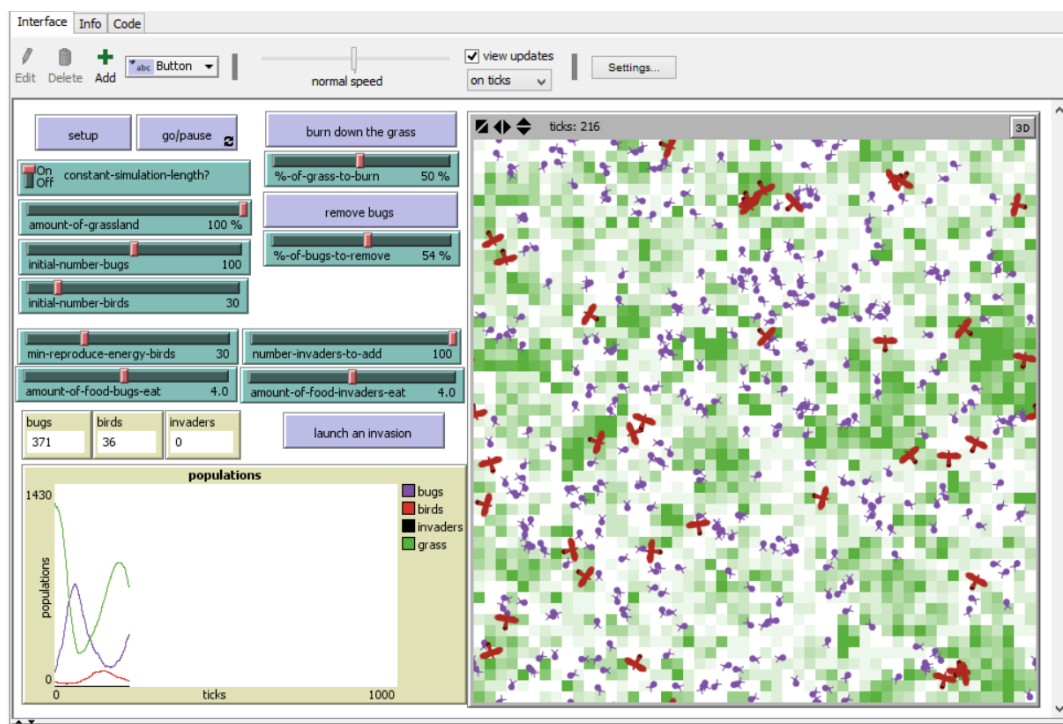
1. NetLogo comes preloaded with a models library. Click File -> Models Library (or Ctrl + M).



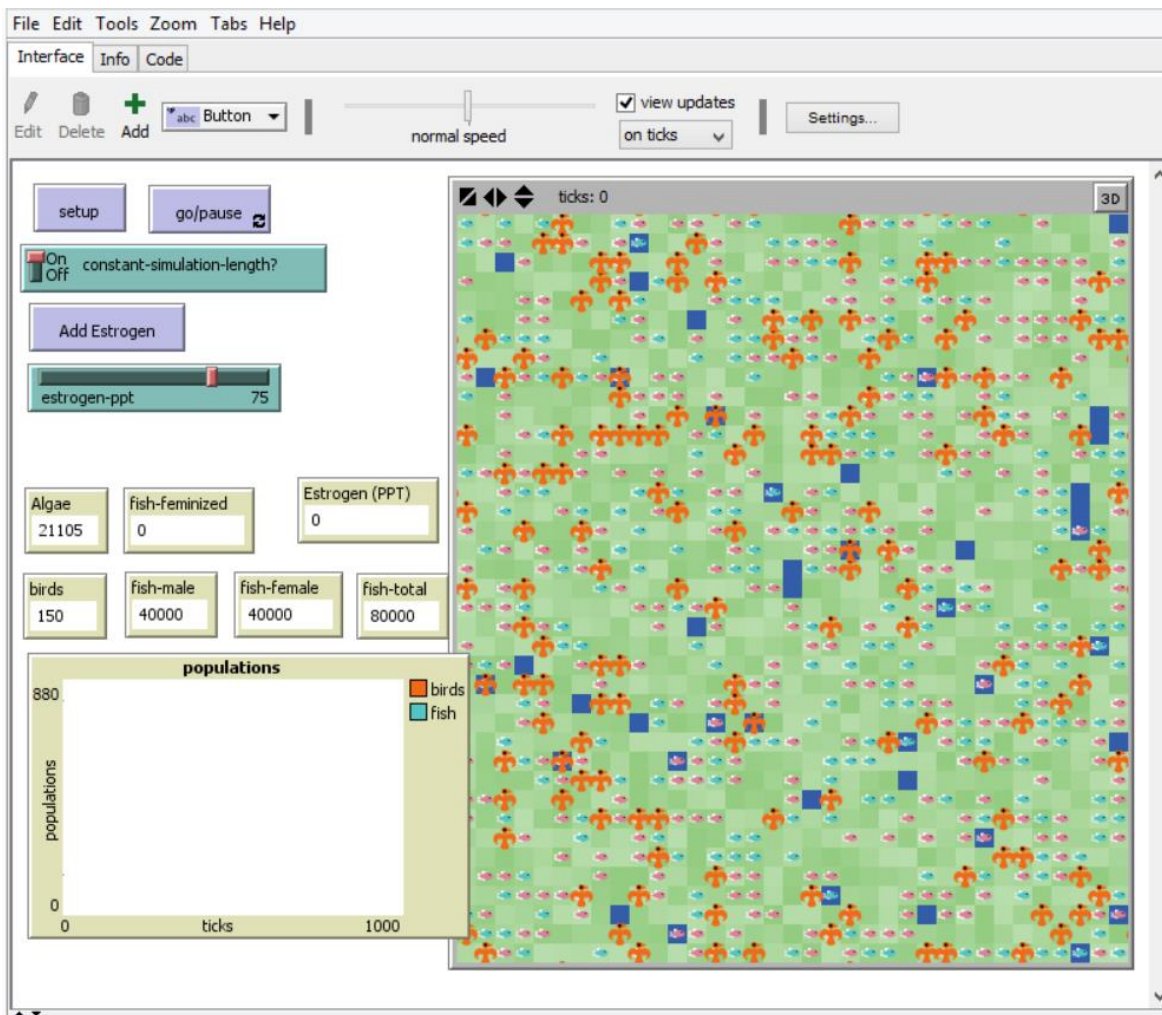
2. You can load a sample model based on the discipline you are interested in. For the purpose of this demo use Curricular Models->BEAGLE Evolution->Bug Hunt Predators and Invasive Species



- There are three tabs at the top titled 'Interface', 'Info', and 'Code'. 'Code' contains the source code for the model and allows for more advanced alterations of the model. I do not recommend messing with the source code unless you are familiar with programming. The 'Info' tab gives insight into the model and is good to read over to learn some of the specifics behind the model. The 'Interface' tab allows the model to be run. Hit the 'setup' button to reset the model or initialize it, and the use 'pause/go' to run the model. Various parameters can also be changed via the sliding bars.



4. By clicking File->Open you can load your own model.



5. My model represents an ecosystem containing birds, fish, and algae. Fish eat algae and birds eat fish. Initially the ecosystem is fairly stable. The ecosystem can be tampered with by adding various amounts of estrogen using the “Add Estrogen” button.